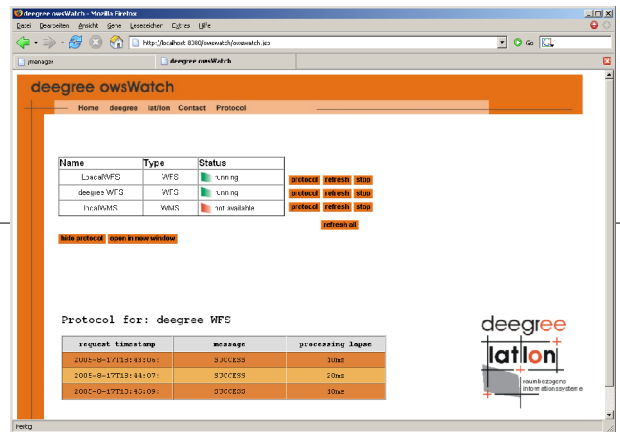


# deegree owsWatch

Ensure that spatial web services are online.



## Funktional Range

Distributed Spatial Data Infrastructures depend on the availability of the components, these usually being OGC Web Services (OWS). Dependencies from external providers, network connections and software components of different vendors pose a number of problems for publishers of such services. The first step in making sure the availability of your own services is their control.

deegree owsWatch is a web-based control console for OGC Web Services like WMS, WFS or WCS. owsWatch sends requests to services to be controlled in regular intervals that can be defined by configuring owsWatch. The responses are then checked and so outage times are discovered and counter-measures can be made. It is also possible with deegree owsWatch to check if specific services react in a given time.

## Technical Features

- + Configuration via XML
- + web-interface with status display for the controlled services

deegree owsWatch is like all deegree components Free Software / Open Source under LGPL (<http://www.deegree.org>)



**latlon**

gesellschaft für raumbazogene informationssysteme mbH  
Aennchenstr. 19 | 53177 Bonn | Germany  
Tel +49 228 184 96 -0 | Fax -29  
<http://www.lat-lon.de> | e-Mail [info@lat-lon.de](mailto:info@lat-lon.de)