

# deegree WMS

Printing large format maps – comfortable and user-friendly.

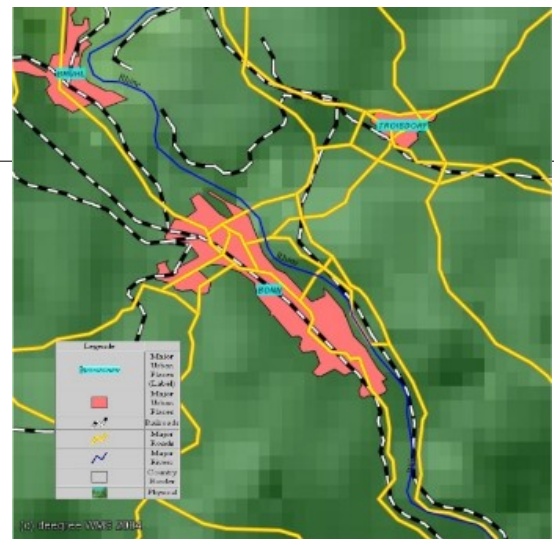
## Funktional Range

deegree Web Map Print Service (WMPS) is a service that delivers maps analogous to a WMS, but optimizes them for print outputs. WMPS receives printing requests and processes them asynchronously. Asynchronicity is necessary as it is possible that several printing requests arrive at the same time, but only one printer is available for output. It can also happen that processing of a print job takes a longer time and that during this time it is not possible to keep a network connection.

After the printing job is received, it is stored in a queue (database). As soon as new resources for the printing service are available – no printing job is processed – the oldest job is fetched from the queue and gets processed.

The configuration of a deegree WMPS is similar to the one of a deegree WMS. The service decides using this information which part of the printing requests it delegates to a WMS and which it processes itself. Additionally the print service is configurable in regard to the amount of time the service has to query the data.

deegree Web Map Print Service is like all deegree components Free Software / Open Source under LGPL (<http://www.deegree.org>)



## Technical Features

- + Access to WMS, WCS or vector data sources (e.g. Geodatabases)
- + Output of different formats (e.g. PDF) up to A0 size
- + Template-based creation of layouts